

# LUSSI

## MULTICUT SORGHUM SUDAN X BICOLOR



### BENEFITS

#### STRONG VIGOR

- **LUSSI** is very aggressive from the start of the cycle. Its vigor at start-up, its strong tillering and the power of its root system allow it to establish itself quickly.

#### HIGH YIELD POTENTIAL

- His earliness make it possible to produce biomass in very short term in summer.

### IDENTITY CARD

#### LATIN NAME

*Sorghum bicolor x Sudanense*

#### PANICLE

Open

#### HEIGHT

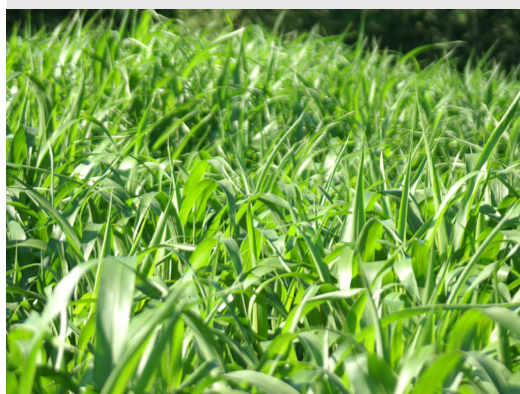
Tall

#### SUM OF TEMPERATURES (BASIS) 6°C

1450

### CULTURE TIPS

- Sow on dry and warmed soil (13 ° minimum).
- Roll after sowing.
- Observe a minimum development of 60 cm for the pasture (caution, risk of toxicity with hydrocyanic acid under this stage).



### USES

USES			POSITIONING				
Cutting	Mixed	Pasture	healthy and deep	Alternating wet/dry	Hydromorphic	Dry acid soil	Dry limestone soil
+++		+++	+++	+++	+++	+++	++

— Not adapted    ++ Adapted    +++ Very adapted

Source: Lidea



### PRODUCTIVITY

#### Yield potential monocut



#### Yield potential multicut



#### Optimal number of cutting/pasture for multicut



### AGRONOMIC CHARACTERISTICS

#### Earliness



#### Early vigor



#### Tolerance to lodging



#### Stay green



#### Growth after pasture/cutting



#### CLIMATE PROFILE

Hot and dry	Medium stress	No stress	Cool and wet
★★★★	★★★★	★★★	★

[www.lidea-seeds.com](http://www.lidea-seeds.com)

The information provided in this document is for informational purposes only, and may vary according to agricultural and climate conditions, as well as cultivation techniques. Disease resistance information applies to diseases or strains currently known in France. March 2021. Source: R&D Lidea.

**Lidea**  
FRESH IDEAS FOR AGRICULTURE