

LID ULTIMO

WINTER RAPE HYBRID 00

LISTED: SK



BENEFITS

HYBRID WITH AN EXCELLENT YIELD POTENTIAL IN ALL SITUATIONS

VERY GOOD GLOBAL DISEASE PROFILE ALL ALONG THE CYCLE TO MAINTAIN POTENTIAL

FAST IMPLANTATION AND DEVELOPMENT BEFORE WINTER

GOOD FROST RESISTANCE TO SECURE COLD WINTER

IDENTITY CARD

YIELD COMPONENTS

- ✓ **Siliques number:** very high
- ✓ **Siliques lenght:** high
- ✓ **TKW:** low

VIGOUR

- ✓ **Autumnal vigour:** good
- ✓ **Vigour after winter:** good

AGRONOMIC CHARACTERISTICS*

	VS	S	FS	FT	T
Stem Elongation					■
Lodging					■
Pod shattering tolerance				■	
Frost resistance				■	

CULTURE TIPS

- ✓ Emergence target around 25-35 plants/m² (not too high to avoid elongation and have strong roots)
- ✓ Density to adapt to your soil:
 - Deep soil: 35 kernels/m²
 - Medium soil: 40 kernels/m²
 - Superficial soil: 45 kernels/m²
- ✓ For a better insects control, you can combine **LID ULTIMO** with **PACK PROTECT** or **PACK SYMBIO** solutions.



PRECOCITY

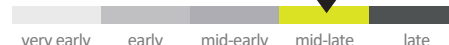
Restart After Winter



Flowering



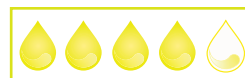
Maturity



QUALITY

Oil content

87 references
Sources: Lidea.



Proteins content

79 references
Sources: Lidea.



TOLERANCE TO DISEASES, INSECTS AND PARASITES

Phoma tolerance*



Cylindrosporiose*



End of cycle diseases*



Broomrape behavior*



Insects behavior*



VS: Very Sensitive - S: Sensitive - FS: Few Sensitive - FT: Few Tolerant - T: Tolerant
* Lidea database.